

WWW.PURAAQUA.IN
+91-9319730995

Pura Aqua Tech Chemicals

PRODUCTS EXPLORATION



FLOW METERS

A **rotameter** (variable area **meter**) is a **flow meter** that measures volumetric **flow** of liquids. The technique for measuring **flow** is accomplished by a freely moving float finding equilibrium in a tapered tube.



DIGITAL FLOW METERS

A **flow meter** (or **flow sensor**) is an instrument **used to** measure linear, nonlinear, mass or volumetric **flow** rate of a liquid.



ELECTROMAGNETIC FLOW METER

Electromagnetic flow meters detect **flow** by using Faraday's Law of induction. Inside an **electromagnetic flow meter**, there is an **electromagnetic** coil that generates a magnetic field, and electrodes that capture electromotive force (voltage).



CONTROL PANELS

The Industrial **RO Controller Panel** is used for operation of the **RO** plants.



DOSING METERING PUMP

A metering pump is used to add small but accurate volumes of a liquid to other fluid streams or vessels. Metering is achieved by controlling the pump's speed or stroke length to achieve a specific delivery **rate** or by controlling the period of operation to supply an accurate single dose.



MULTI PORT VALVES

Multiport valves are called multi-ports because inside the **valve**, there are multiple ports that allow the water to move in multiple directions.



DISTRIBUTION SYSTEM

Distribution & Collection System are suitable to all makes of FRP / Composite pressure vessels. High precision, premium quality with ease of installation into tanks results in efficient performance of packaged industrial & potable water treatment plant.



FRP PRESSURE VESSEL

FRP (Fibreglass Reinforced Plastics) is a modern composite material of construction for chemical plant equipment like tanks and vessels. FRP vessels are widely used in municipal waste water treatment plants and water treatment plants.



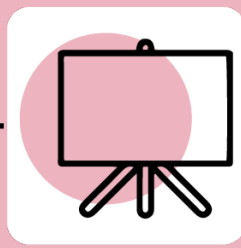
MEMBRANE

A **reverse osmosis membrane** is a semi-permeable **membrane** that allows the passage of water molecules but not the majority of dissolved salts, organics, bacteria and pyrogens.



MEMBRANE HOUSING

Membrane housing is a pressure vessel for loading **membrane** elements in a reverse osmosis water treatment system.



WWW.PURAAQUA.IN
+91-9319730995

Pura Aqua Tech Chemicals

PRODUCTS EXPLORATION



UF MEMBRANE

Ultrafiltration (UF) is a variety of **membrane** filtration in which forces like pressure or concentration gradients lead to a separation through a semipermeable **membrane**.



BAG FILTERS

Bag filters are **used for** the clarification/**filtration** of fluids that have a relatively small loading of particles to be removed. The particle suspension passes through and the particles settle in the **bag**.



CARTRIDGE HOUSING

A Filter Housing is a casing around filter Cartridges or Bags or Basket. Filter Housings are available in different sizes and styles.



PRESSURE GAUGES

Pressure gauge, instrument for measuring the condition of a fluid (liquid or gas) that is specified by the force that the fluid would exert, when at rest, on a unit area, such as pounds per square inch or newtons per square centimetre.



FILTER MEDIA

Filter media is used in **Water Treatment Filtration** in portable **water** treatment, R.O. reverse Osmosis treatment plant, surface **water** treatment, swimming pool **water** treatment, and wastewater treatment also in conventional **water** treatment filters.



ACTIVATED CARBON

Activated carbon is **used** to purify liquids and gases in a variety of applications, including municipal drinking water, food and beverage processing, odor removal, industrial pollution control.



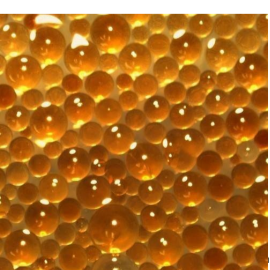
UV PURIFICATION SYSTEM

A **UV water purifier** treats micro-biologically unsafe **water** with germicidal **ultraviolet light**. The **UV** wavelength scrambles the DNA of living organisms in the **water**, so they can no longer reproduce and make you sick. If you drink bacteria-infested **water**, the organisms can embed in your digestive tract and replicate.



RO ANTISCALANT

Antiscalant is a pretreatment that gets injected into the feedwater that flows through the **RO** membrane, preventing the membrane from scaling. **RO** membrane scaling occurs when particles accumulate on a membrane, causing the membrane's pores to plug.



RESIN-ION EXCHANGE

Ion exchange resins are used to soften **water** by replacing the cations with sodium ions (and possibly the anions with chloride ions) of sodium chloride. They may also be used to demineralize **water** where the cations are replaced by H⁺ ions and the anions are replaced by OH⁻ ions.



MICRON FILTER

Micron Filtration is a type of physical **filtration** process where a contaminated fluid is passed through a special pore-sized cartridge to separate suspended particles from process liquid.