



- Septic Tank Cleaning ..... 1
- Sludge Treatment Plant Cleaning ..... 2
- Pre-Monsoon Cleaning ..... 3
- Urinal Pot Chock up Cleaning ..... 4
- Chamber Cleaning ..... 5
- Chock up Cleaning ..... 6

## Septic Tank Cleaning

A septic tank is a tank that collects all the waste like sludge, sewage and urinary tract. Those tanks appear in a small complex. Customer should clean the septic tank from time to time otherwise harmful toxic gases like Hydrogen Dioxide, Carbon Monoxide, Ethane, Methane etc. May be produced from those tanks. Hydrogen disulphide causes the sudden death of most workers.

### **Our role in septic tank cleaning**

We use one of the following methods for cleaning of Septic tank

- truck mounted suction machine
- Submersible pump

After removing excess sludge with help of submersible pump and diluting sludge with extra water. Items that should not inhibit your septic tank:

- Insecticides and soils
- Feminine products
- Grease among many others

**Submersible Pump Method** →



**Suction machine method** →



## Sludge Treatment Plant Cleaning

- These plants are situated in big complex.
- These plants contents following components
  1. Raw water tank
  2. Tube settler
  3. Intermediate storage tank
  4. Treated water tank
  5. Screen Chamber
  6. Oil and grease tank
  7. Sludge holding tank

The customer has to clean the septic tank time to time or else those tanks can generate hazardous & toxic gases like Hydrogen di sulphide, carbon monoxide ethane methane etc. Our role in septic tank cleaning

### **We use one of the following methods for cleaning of Septic tank:**

- High flow truck mounted suction machine
- Submersible pump

After removing as much as sludge with help of submersible pump and diluting sludge with extra water. Items that should not inhibit your septic tank:

- Insecticides and soils
- Feminine products
- Grease amongst many other



## Pre-Monsoon Cleaning

We do under take pre-monsoon cleaning work. Which includes rain water drain cleaning work, trench cleaning work, basement sump pit, Open drain line throughout periphery of complex area or in basement.



## Urinal Pot Chock up Cleaning

Urinal pot chock up cleaning will be done with help of machine. We can also cleaning wash basin and toilet.



## Chamber Cleaning

### Drainage Chambers Types

- Circular
- Rectangular
- Square

### The chambers have covers which has below materials

- Metal
- Concrete
- Fibre

Depth of chamber depends upon inlet and outlet flow of chamber.

The depth may vary between 1 feet to maximum 20 feet.

According to chamber height we take a call, whether to go for manual cleaning or machine cleaning.

Machine cleaning means cleaning by Truck mounted Suction machine.

When there is sludge which was stuck inside the chamber at that time we remove all chamber covers which are nearby to particular chamber.

This practice gives some space to remove hazardous and toxic gases from chamber.

After that only we decide line of action to carry chamber cleaning work.

### Suction machine Chamber Cleaning



### Manual Chamber Cleaning with safety



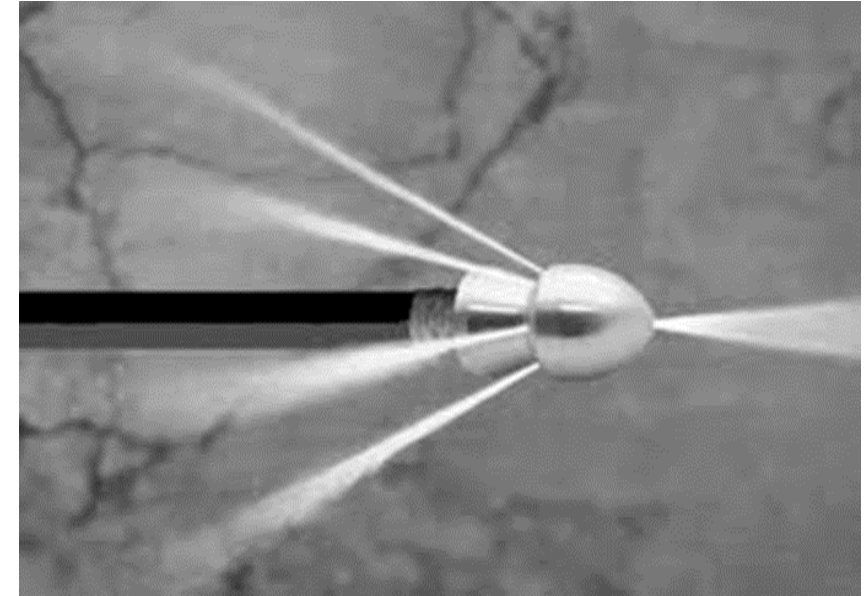
## Chock up Cleaning

Chock up is phenomenon where the flow of drain line got stuck up and concern chamber get flooded with sludge which cause bad smell and health hazards. These chock up can be removed with help of following methods

- Truck mounted high-pressure water jetting machine having water pressure of 150 bar which equals to weight of 150 kg put on square of 1cm x 1cm. This machine can clear any chock up in horizontal drain line



**Nozzle with high pressure water jet**



## Chock up Cleaning

- Manual Rodding System – In this method we are using rods which will be able to link each other and having length of 1 meter. This rodding system is perfect for removing chock up of Drain line.





**THANK YOU**

---